



# GAT MONTHLY MEMBERSHIP PROGRESS REPORT

Results as of: 12/31/2023

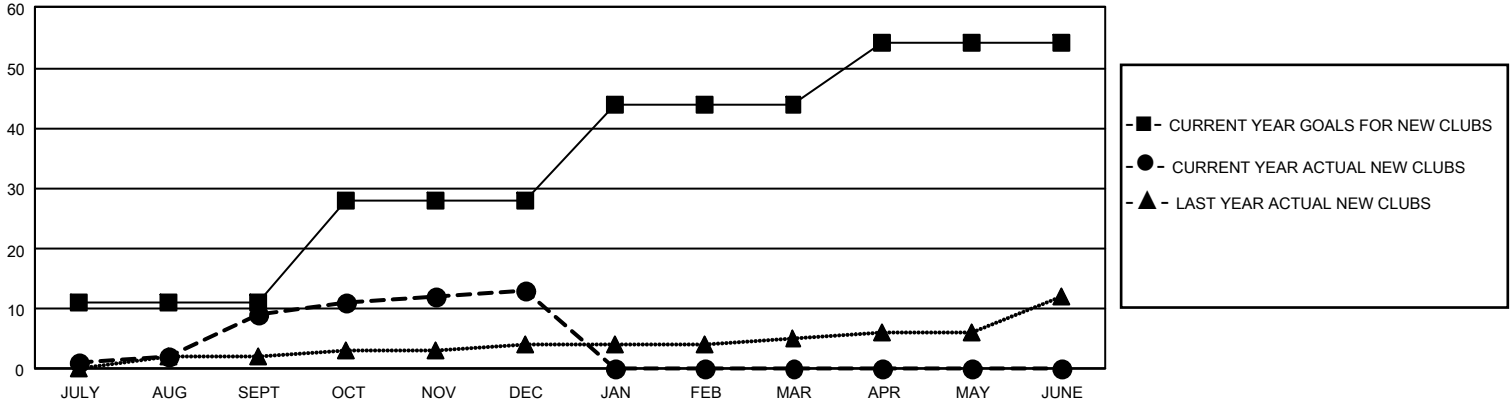
## GMT Constitutional Area 1, Group A

REPORT DOES NOT INCLUDE CLUBS IN UNDISTRICTED AREAS.

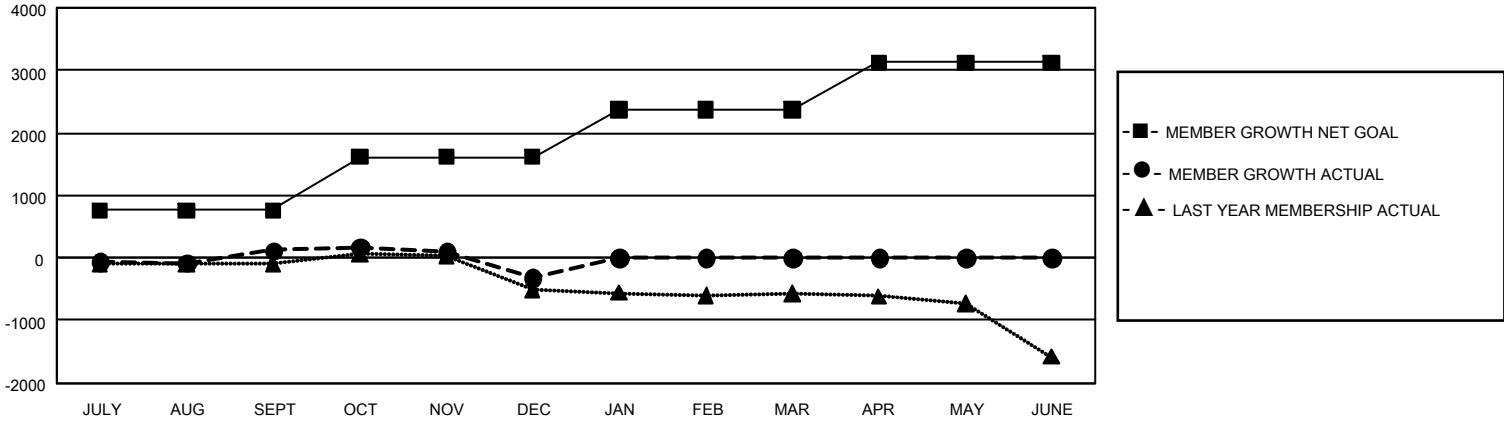
Clubs			
RESULTS FOR 2023-2024			
QUARTER	NEW CLUB GOAL	NEW CLUBS	DROPPED CLUBS
JULY/AUG/SEPT	33	9	11
OCT/NOV/DEC	51	4	16
JAN/FEB/MAR	48	0	0
APR/MAY/JUNE	30	0	0

Members			
RESULTS FOR 2023-2024			
QUARTER	MEMBER GROWTH NET GOAL	MEMBER GROWTH ACTUAL	DROPPED MEMBERS ACTUAL (including transfers)
JULY/AUG/SEPT	765	1,569	1,272
OCT/NOV/DEC	850	1,095	1,444
JAN/FEB/MAR	748	0	0
APR/MAY/JUNE	763	0	0

GOALS AND ACTUAL NEW CLUBS CUMULATIVE



GOALS AND ACTUAL MEMBERS CUMULATIVE



<b>DROPPED CLUBS: 27</b>	652 CLUBS OF 1,417 ADDED 1 OR MORE NEW MEMBERS	<b><u>GENDER DISTRIBUTION</u></b>	
		MALE 23,628 (63.50%) FEMALE 13,568 (36.46%) NON BINARY 5 (0.01%) PREFER NOT TO ANSWER 11 (0.03%)	
<b><u>DROPPED MEMBERS</u></b>		<a href="#">CLICK HERE FOR CUMULATIVE MEMBERSHIP DATA</a>	TOTAL FAMILY UNIT MEMBERS 5,960
DECEASED 237 CLUB CANCELLED 110 OTHER 2,367 <b>TOTAL 2,714</b>			FAMILY MEMBERS PAYING HALF DUES 3,047